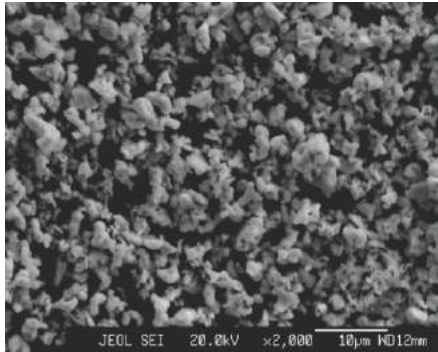


Grade
ZF

SEM-VIEW



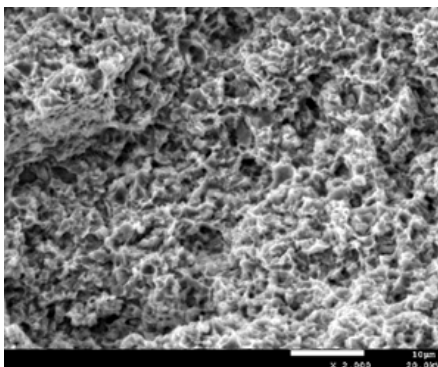
Chemical Analysis (%)

Fe	≥98.2
O	≤1.15

Physical Properties

Particle Size Distribution (µm)	D10	1.0-1.5
	D50	2.5-3.5
	D90	4.2-5.2
Apparent Density (g/cm ³)	1.5-2.5	
Theoretical Density (g/cm ³)	7.86	

Sintered Shape: 750°C



- Replacing **Carbony Iron Powder**
- High strength / High hardness
- High performance

Sintering Physical Properties

Sintering Temp (°C)	Density (%)	Hardness (HRB)	Bending Strength (MPa)
600	78.58	56.7	365.1
650	95.61	94.5	820.4
700	96.00	95.2	968.9
750	96.69	94.2	1002.0
800	97.36	91.0	943.2
850	95.37	84.1	691.9
900	96.79	82.9	757.7
950	97.17	85.8	750.6

The Best Sintering Range: 700-775°C

The Min.Temperature in Use: 700°C

The Max.Hardness: 97HRB

The Max.Bending Strength: 1176MPa

