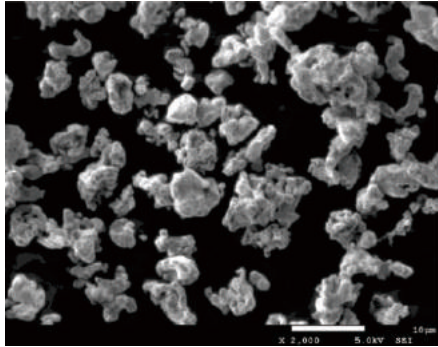


Grade
ZB

SEM-VIEW



- The structure of sintering is fine and uniform, similar to imported carbonyl iron powder.
- Good fluidity, cold pressing effect
- The effect of cutting edge is good

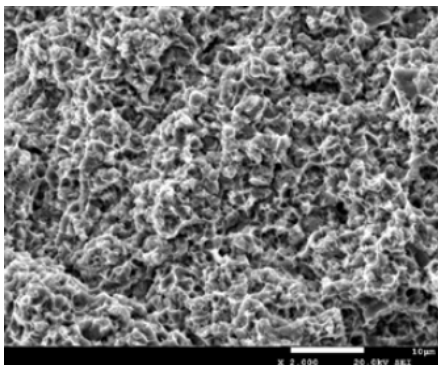
Chemical Analysis (%)

Fe	≥98.3
O	≤1.10

Physical Properties

Particle Size Distribution (μm)	D10	1.2-2.8
	D50	3.0-4.8
	D90	5.3-7.6
Apparent Density (g/cm ³)	1.5-2.6	
Tap Density (g/cm ³)	2.7-4.0	

Sintered Shape: 750°C



Sintering Physical Properties

Sintering Temp (°C)	Density (%)	Hardness (HRB)	Bending Strength (MPa)
650	95.22	86.3	895.0
700	96.52	90.5	1088.0
750	98.38	89.0	1105.0
800	97.34	85.5	944.0
850	97.32	76.7	862.0
900	97.93	77.1	904.0
950	97.38	78.3	819.0

The Best Sintering Range: 700-800°C

The Min.Temperature in Use: 700°C

The Max.Hardness: 90.5HRB

The Max.Bending Strength: 1105MPa

