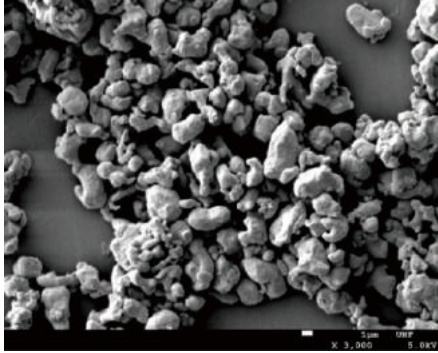
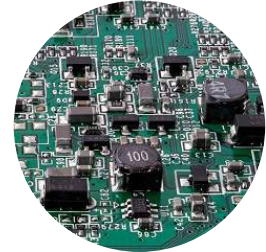


Grade
UHF

SEM-VIEW



- For **electronic components**



Chemical Analysis	(%)
Fe	≥98.2
O	<1.15
C	<0.03
N	<0.01

Electromagnetic Performance	
Initial Permeability $\mu \pm 20\%$	30
Q Value	32
Insulation Resistance (MΩ)	≤1
L(10A)Drop	16%
Molding Density (g/cm ³)	6.20

Physical Properties		
	D10	1.0-1.5
Particle Size Distribution (μm)	D50	2.5-3.5
	D90	4.2-5.2
Average Particle Size (mesh)		>3500
Apparent Density (g/cm ³)		0.8-1.5
Tap Density (g/cm ³)		2.0-3.2

Test Instruments & Condition:
 LCR Meter: TH2826A+TH1776 At 100KHz 1.0V;
 Winding: Φ0.35mm 2UEW * 20TS
 Test Core: OD 10.7mm; ID 6.0mm Percent of Resin: 2%
 Insulation resistance tester: TH9201 Test Voltage: 150V;
 Test Time: 6s

Packing And Storage	
Standard Packing (kg/barrel)	30
Packing:	Vacuum and foil bag filled with protective gas sealed and packed in iron drum.
Storage:	Store in room temperature and dry environment; Avoid high humidity and high temperature; Use immediately after opening the inner bag.