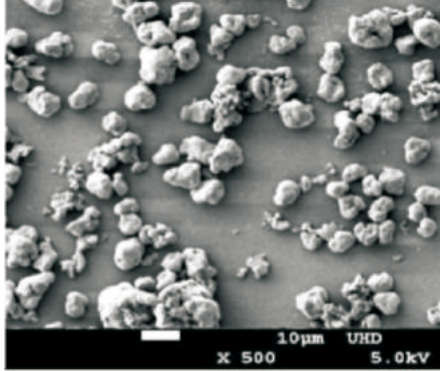


Grade
UHD

SEM-VIEW



- For **electronic components**



Chemical Analysis (%)

Fe	≥98.65
O	<0.70
C	<0.03
N	<0.01

Physical Properties

	D10	3.5-5.0
Particle Size Distribution (µm)	D50	7.0-9.0
	D90	13.0-23.0
Average Particle Size (mesh)		>1250
Apparent Density (g/cm³)		1.9-2.5
Tap Density (g/cm³)		3.2-4.2

Electromagnetic Performance

Initial Permeability	µi±20%	38
Q Value		36
Insulation Resistance (MΩ)		≤1
L(10A)Drop		30%
Molding Density (g/cm³)		6.30

Test Instruments & Condition:

LCR Meter:TH2826A+TH1776 At 100KHz 1.0V;
Winding: Φ0.35mm 2UEW * 20TS
Test Core: OD 10.7mm; ID 6.0mm Percent of Resin: 2%
Insulation resistance tester: TH9201 Test Voltage: 150V;
Test Time:6s

Packing And Storage

Standard Packing (kg/barrel) **25**

Packing: Vacuum and foil bag filled with protective gas sealed and packed in iron drum.

Storage: Store in room temperature and dry environment; Avoid high humidity and high temperature; Use immediately after opening the inner bag.