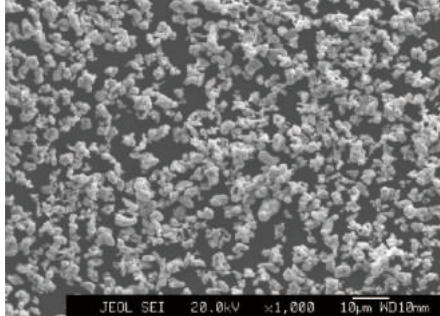


Grade
UHB

SEM-VIEW



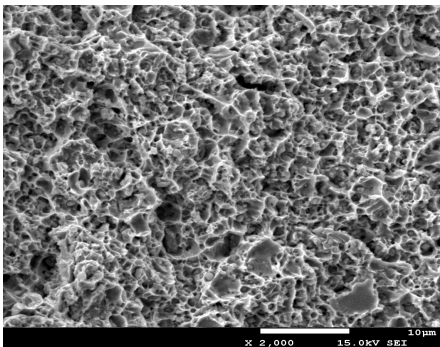
Chemical Analysis (%)

Fe	≥98.5
O	≤0.85
C	≤0.03
N	≤0.01

Physical Properties

Particle Size Distribution (µm)	D10	1.5-2.5
	D50	3.3-4.3
	D90	5.5-7.0
Apparent Density (g/cm³)	0.9-1.8	
Tap Density (g/cm³)	2.4-3.6	

Sintered Shape: 800°C



- Replacing **Carbony Iron Powder**
- High strength / High hardness
- Increase the holding powder of diamond

Sintering Physical Properties

Sintering Temp (°C)	Density (%)	Hardness (HRB)	Bending Strength (MPa)
650	86.71	66.6	457.9
700	92.17	78.8	631.7
750	97.71	88.9	815.8
800	97.79	88.9	852.2
850	97.75	78.4	795.4

The Best Sintering Range: 700-800°C

The Min.Temperature in Use: 700°C

The Max.Hardness: 91.5HRB

The Max.Bending Strength: 885.6MPa

