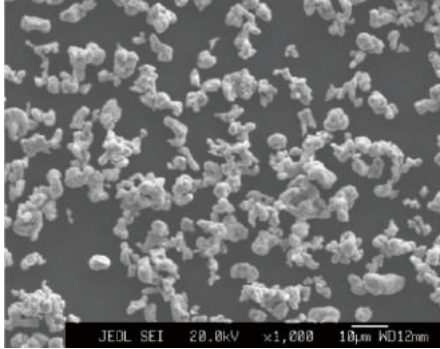


Grade
UHA

SEM-VIEW



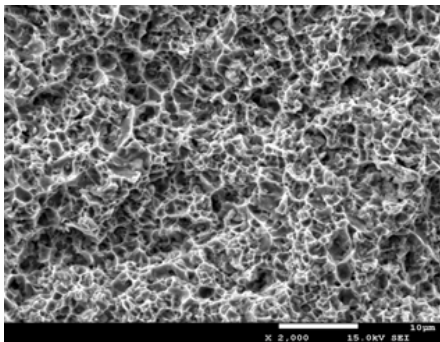
Chemical Analysis (%)

Fe	≥98.8
O	≤0.60
C	≤0.03
N	≤0.01

Physical Properties

	D10	2.3-3.1
Particle Size Distribution (µm)	D50	4.8-5.5
	D90	8.0-10.0
Apparent Density (g/cm³)		1.2-1.6
Tap Density (g/cm³)		2.3-3.2

Sintered Shape: 800°C



- Replacing **Carbony Iron Powder**
- High strength / High hardness
- Improve the wear resistance of the tool

Sintering Physical Properties

Sintering Temp (°C)	Density (%)	Hardness (HRB)	Bending Strength (MPa)
650	87.86	67.7	477.3
700	93.99	80.9	700.0
750	97.29	85.8	866.7
800	98.02	84.4	824.3
850	97.20	73.6	745.2

The Best Sintering Range: 700-800°C

The Min.Temperature in Use: 700°C

The Max.Hardness: 89HRB

The Max.Bending Strength: 932MPa

