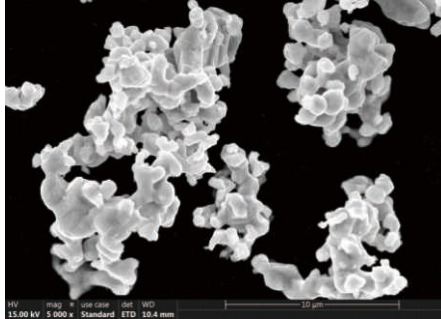


Grade
SUZ-01

SEM-VIEW



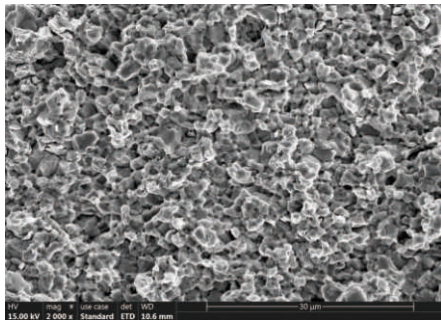
Chemical Analysis	(%)
Zn	8.5
Fe	Main Component

Physical Properties		
Particle Size Distribution (μm)	D50	≥10.00
	D90	≤100.00

Apparent Density (g/cm³) 0.90~1.60

Tap Density (g/cm³) 1.80~2.60

Sintered Shape: 850°C



Sintering Physical Properties

Sintering Temp (°C)	Density (g/cm ³)	Hardness (HRB)	Bending Strength (MPa)
650	6.54	70.0	372.1
700	6.97	82.5	511.3
750	7.28	91.9	715.8
800	7.54	98.8	862.1
850	7.58	99.8	1156.7

