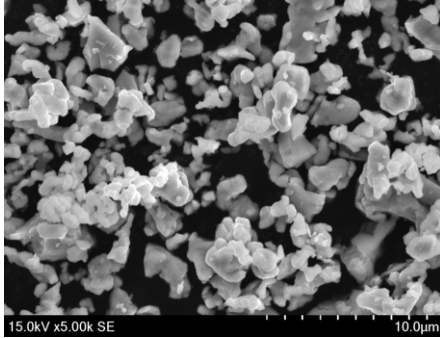


Grade
SPH-01

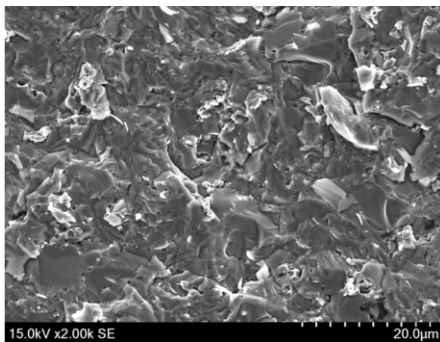
SEM-VIEW



Chemical Analysis	(%)
P	9.5-11.5
Fe	Bal.
O	≤1.00

Physical Properties		
Particle Size Distribution (µm)	D10	0.50-2.10
	D50	2.20-3.60
	D90	3.80-8.10
Apparent Density (g/cm ³)	0.8-1.5	
Theoretical Density (g/cm ³)	7.26	

Sintered Shape: 850°C



- For wire saw, glass, ceramic tool
- High sharpness / High hardness
- Brittle material

Sintering Physical Properties

Sintering Temp (°C)	Density (g/cm ³)	Hardness (HRC)	Bending Strength (MPa)
700	6.74	47.7	234.3
750	6.90	53.0	244.0
800	6.96	55.3	222.7
850	6.99	55.4	251.3
900	6.98	53.8	259.8

