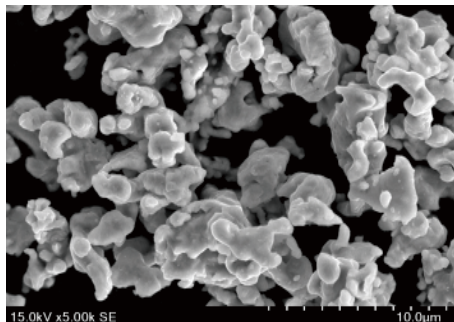


Grade **SHN-01**

SEM-VIEW



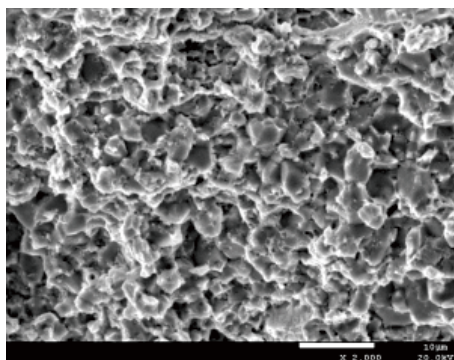
Chemical Analysis (%)

Element	Main Component (%)
Fe	Main Component
Cu	20.0
Sn	2.0
Ni	20.0
P	1.0
H ₂ -Loss	0.48

Physical Properties

	D10	0.99
Particle Size Distribution (µm)	D50	3.64
	D90	16.94
	<hr/>	
Apparent Density (g/cm ³)	1.52	
Theoretical Density (g/cm ³)	8.21	

Sintered Shape 800°C



- For wire saw, brazing, gang saw and free sintering.

Sintering Physical Properties

Sintering Temp (°C)	Density (g/cm ³)	Hardness (HRB)	Bending Strength (MPa)
700	7.86	100.7	1176.7
750	7.97	104.2	1406.7
800	8.04	105.0	1530.0
850	8.05	102.8	1475.0
900	8.03	98.50	1210.0
950	8.07	97.80	1196.7

