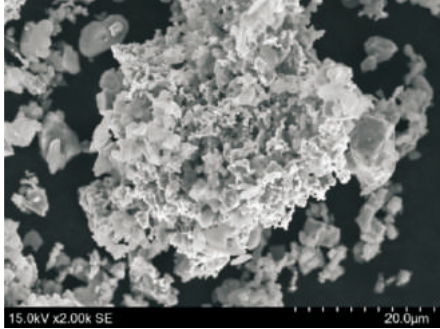


Grade  
**SE-03**

SEM-VIEW



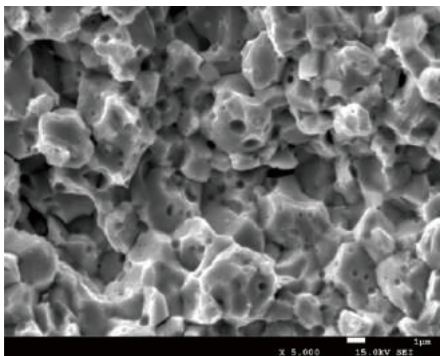
Chemical Analysis (%)

Fe	≥98.4
O	≤0.70

Physical Properties

Particle Size Distribution (µm)	D10	9.4-10.7
	D50	65.9-66.8
	D90	125.8-126.0
Apparent Density (g/cm³)	2.0-2.6	
Tap Density (g/cm³)	3.1-3.9	

Sintered Shape: 820°C



- For cold pressed saw blade
- Can reduce the content of Cu
- Good fluidity, cutting material.

Sintering Physical Properties

Sintering Temp (°C)	Density (%)	Hardness (HRB)	Bending Strength (MPa)
700	81.77	41.0	89.2
750	85.94	66.3	236.8
800	92.12	90.6	533.5
850	93.43	100.7	609.6
900	91.85	98.1	608.5

The Best Sintering Range: 800-900°C

The Min.Temperature in Use: 820°C

The Max.Hardness: 103.5HRB

The Max.Bending Strength: 637.1MPa

