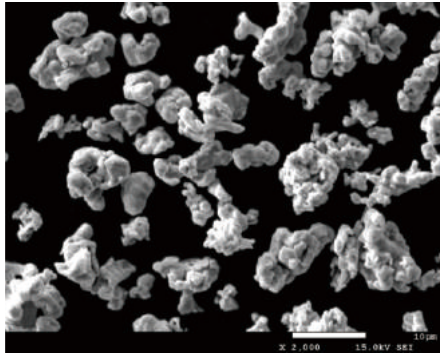


Grade

SE-02



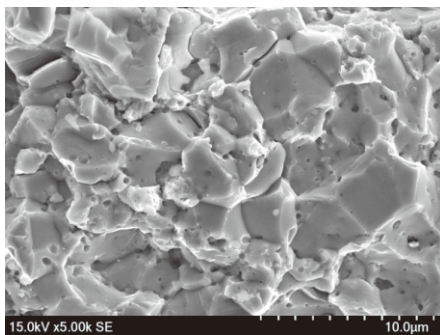
SEM-VIEW



Chemical Analysis	(%)
Fe	≥98.5
O	≤0.66

Physical Properties		
Particle Size Distribution (µm)	D10	7.6-8.4
	D50	47.0-48.4
	D90	103.2-104.8
Apparent Density (g/cm³)	1.2-1.8	
Theoretical Density (g/cm³)	7.74	

Sintered Shape: 820°C



- For segment, saw blade

- Reduce the content of Cu: **30%**

15%

- High iron-based formula

Sintering Physical Properties

Sintering Temp (°C)	Density (%)	Hardness (HRB)	Bending Strength (MPa)
700	91.62	75.6	469.0
750	94.33	86.9	615.8
800	94.33	90.9	702.1
850	98.45	104.6	994.7
900	98.71	108.3	1097.2

The Best Sintering Range: 800-900°C

The Min. Temperature in Use: 820°C

The Max. Hardness: 109.5HRB

The Max. Bending Strength: 1192MPa

