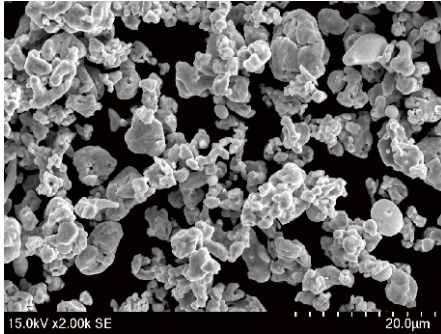


Grade  
**SCF-07**

SEM-VIEW



- It can be used for the main powder of glass drill bit and grinding wheel and it is recommended that the sintering temperature is 700-800 °C.
- The fracture has ductile and brittle structures, with good self-sharpening.

Chemical Analysis	(%)
Fe	61.0-65.0
Cu	25.0-29.0
Sn	Bal.
O	≤0.70
N	≤0.05

Sintering Physical Properties			
Sintering Temp (°C)	Density (g/cm <sup>3</sup> )	Hardness (HRB)	Bending Strength (MPa)
700	8.05	100.8	763.3
750	8.01	100.1	696.7
800	8.04	95.5	713.3
850	8.04	95.2	725.0
900	7.93	94.4	660.0

Physical Properties		
Particle Size Distribution (µm)	D10	1.50-4.00
	D50	4.50-8.00
	D90	8.50-15.00
Apparent Density (g/cm <sup>3</sup> )	1.40-2.40	
Tap Density (g/cm <sup>3</sup> )	3.00-4.00	

The Max.Hardness: 103.0HRB  
The Max.Bending Strength: 785.0MPa

Sintered Shape: 750°C

