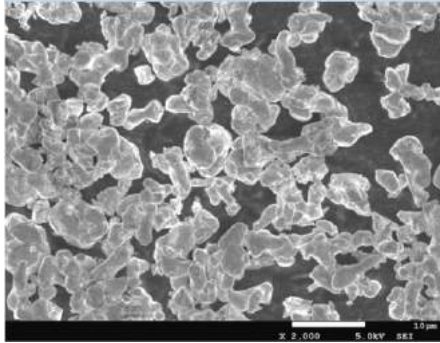


Grade

## Kind4-1234

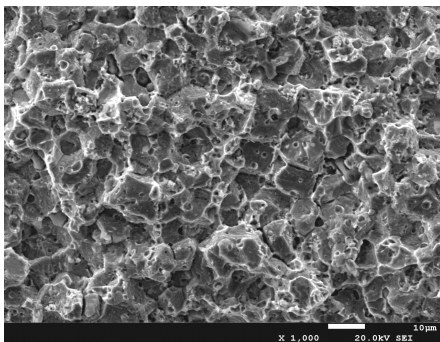
### SEM-VIEW



Chemical Analysis	(%)
Fe	Main Component
Cu	18
Ni	2
Sn	2

Physical Properties		
Particle Size Distribution (μm)	D10	3.4-3.9
	D50	5.2-8.5
	D90	9.6-10.2
Apparent Density (g/cm <sup>3</sup> )	1.4-1.9	
Tap Density (g/cm <sup>3</sup> )	3.1-3.6	

Sintered Shape: 800°C



- For small & medium saw blade, grinding tool
- Replacing **cobalt powder**
- Excellent polishing/grinding/cutting performance

### Sintering Physical Properties

Sintering Temp (°C)	Density (%)	Hardness (HRB)	Bending Strength (MPa)
650	91.50	81.0	577.0
700	96.90	99.5	943.0
750	97.90	105.7	1043.0
800	98.00	107.2	1002.0
850	98.50	109.0	1106.0
900	98.50	110.3	1139.0

The Best Sintering Range: 750-900°C

The Min.Temperature in Use: 750°C

The Max.Hardness: 110.3HRB

The Max.Bending Strength: 1139MPa

