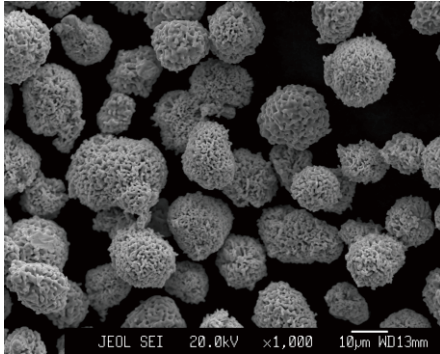


Grade  
**X-Cu**

SEM-VIEW



- Made in chemical way, good fluidity
- High apparent and tap density
- High purity(>99.5%), low impurity content
- The color is rosy. Fine particle size

Chemical Analysis (%)

Cu	>99.5
H <sub>2</sub> -LOSS	≤0.25

Packing And Storage

Standard Packing (kg/barrel) **30**

**Packing:** Vacuum and foil bag filled with protective gas sealed and packed in iron drum.

**Storage:** Store in room temperature and dry environment; Avoid high humidity and high temperature; Use immediately after opening the inner bag.

Physical Properties

	D10	8.0-13.0
Particle Size Distribution (µm)	D50	15.0-20.0
	D90	24.0-30.0
Average Particle Size (mesh)		800
Apparent Density (g/cm <sup>3</sup> )		2.8-3.3
Tap Density (g/cm <sup>3</sup> )		3.5-4.0

